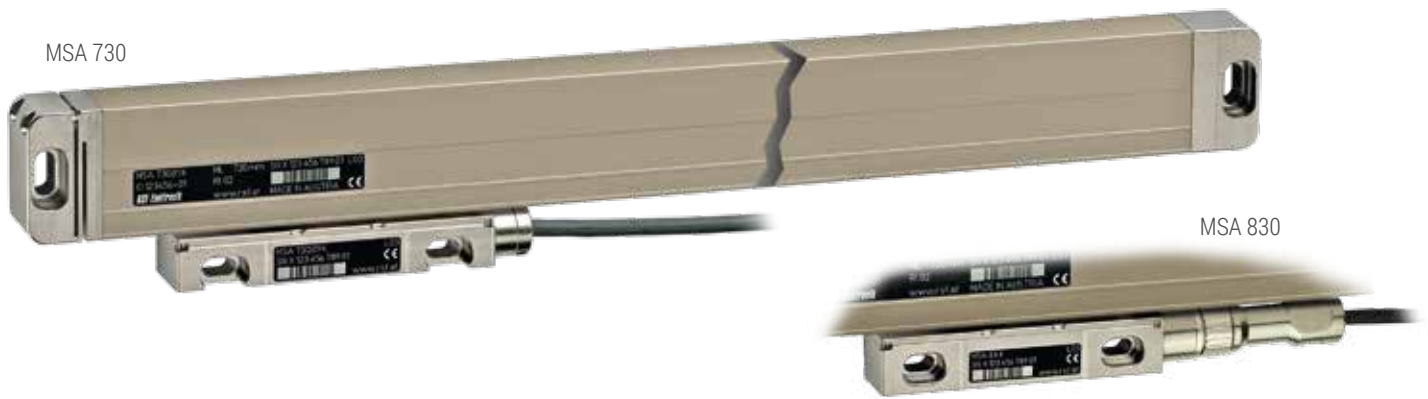
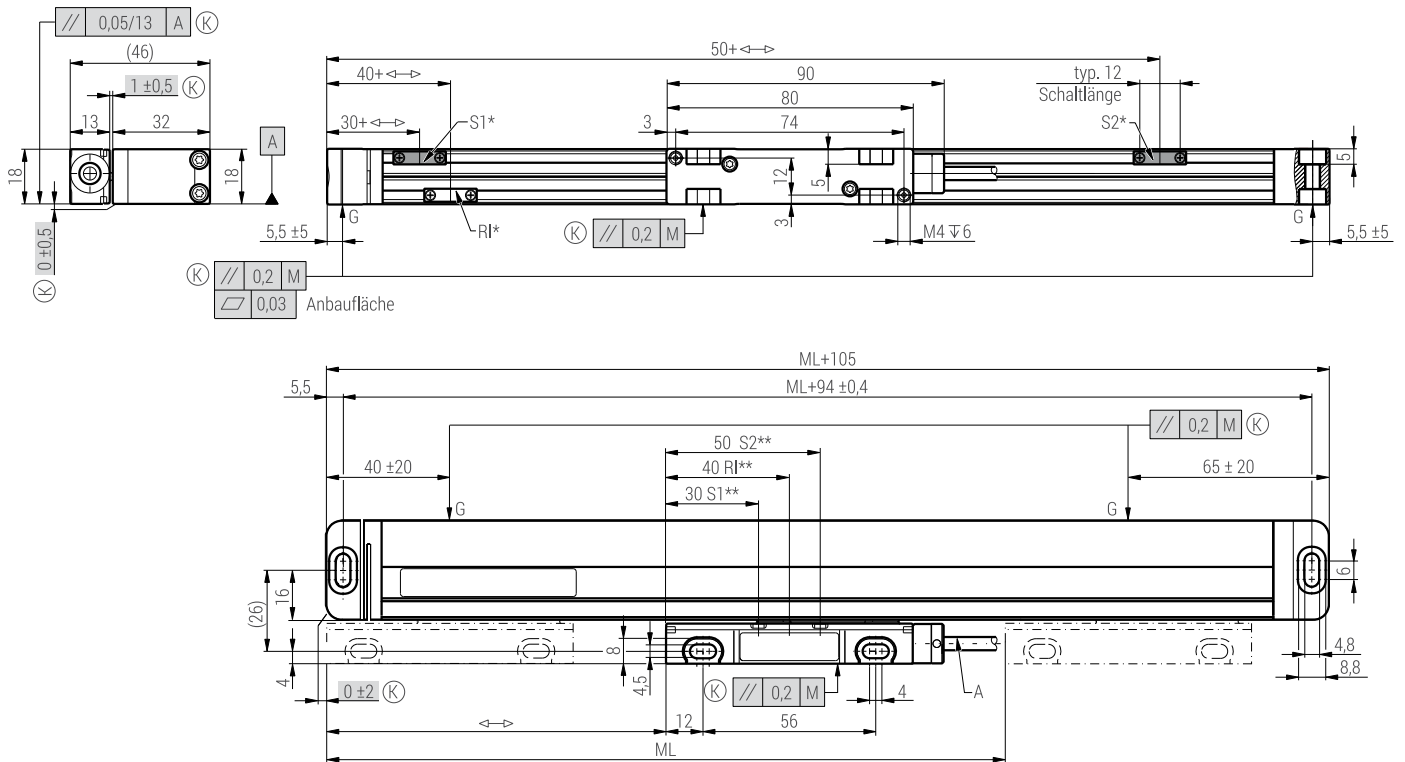


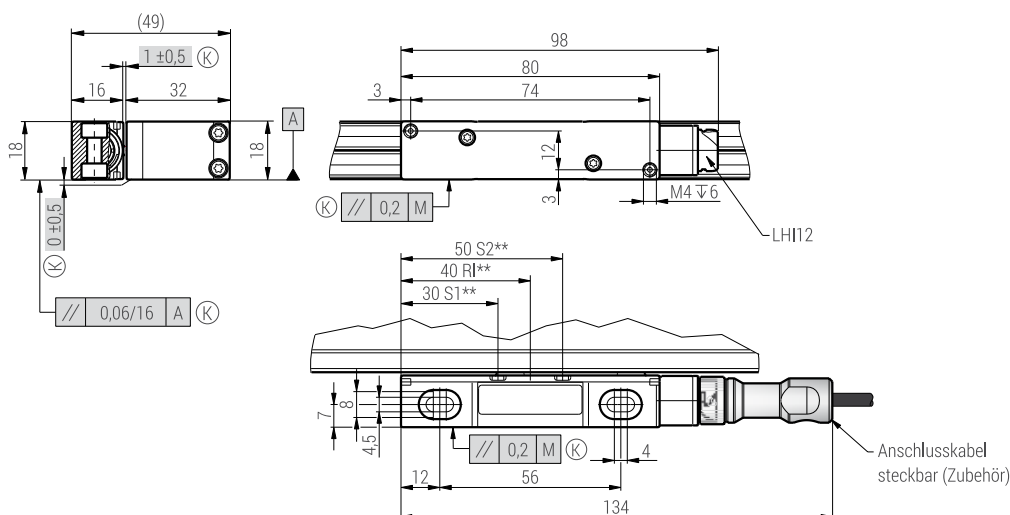
# MSA 730, MSA 830



## Abmessungen, Anbautoleranzen MSA 730:



## Abmessungen, Anbautoleranzen MSA 830:



M = Maschinenführung

ML = Messlänge

G = Messpunkte

↔ = 0 ... ML

A = Anschlusskabel

LHI12 = Stecker

(K) = kundenseitige Anbaumaße

OPTIONEN:

S1, S2 = Schaltsignale

RI = wählbare Referenzmarke

\* = Schaltmagnet

\*\* = Sensorposition