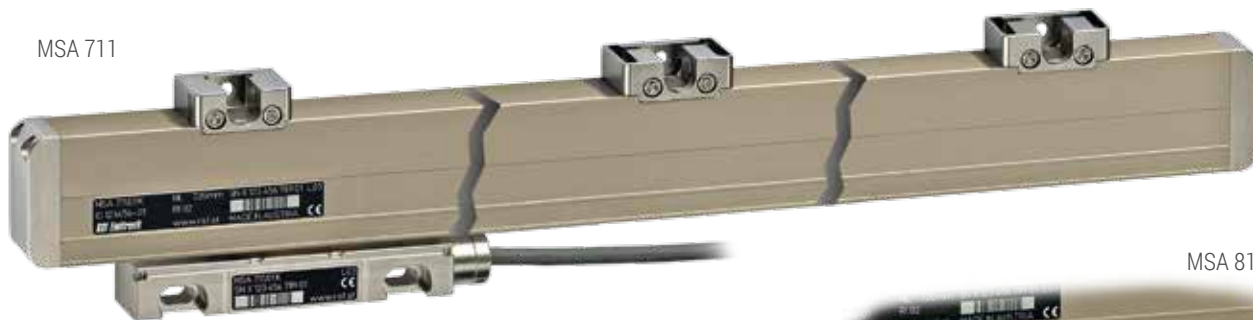


MSA 711, MSA 811

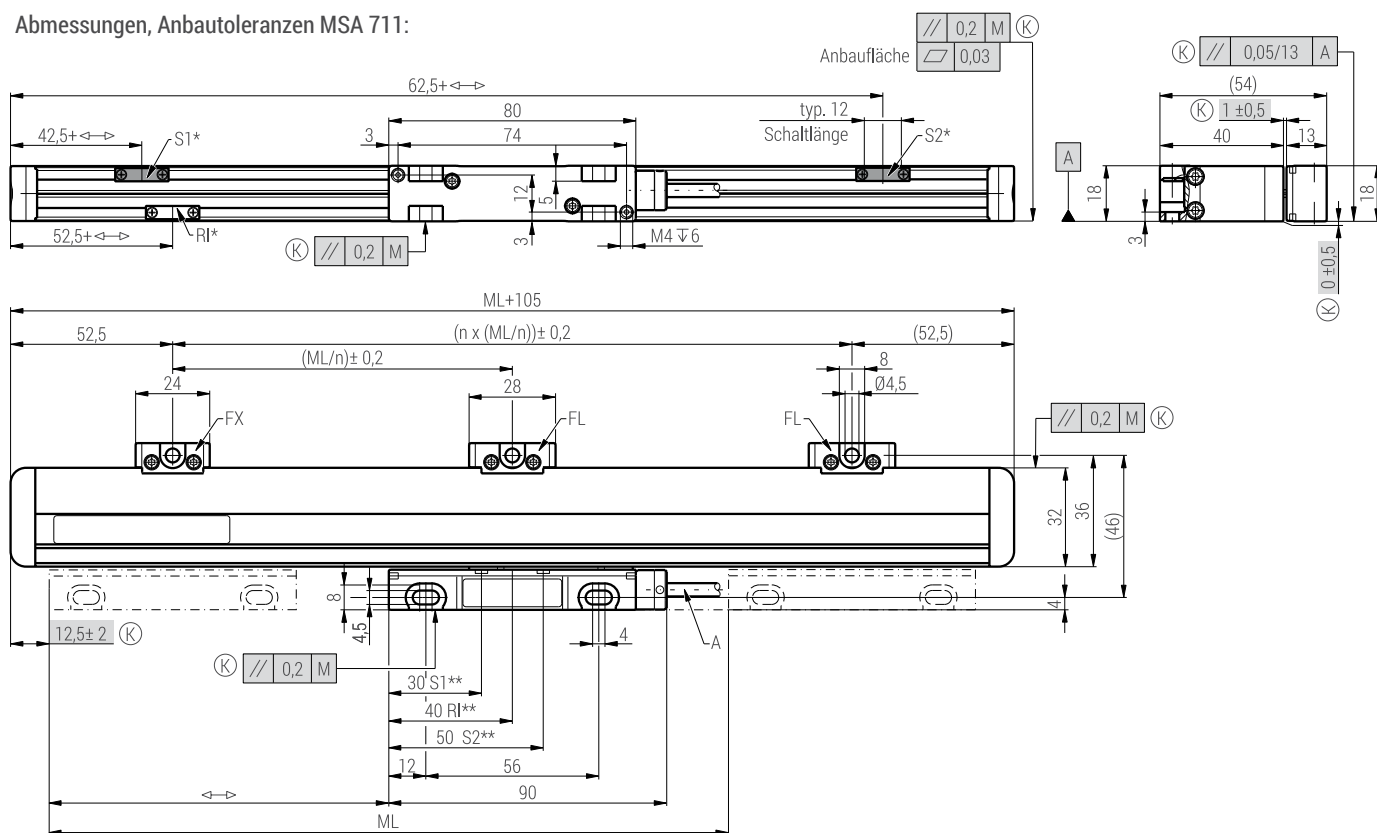
MSA 711



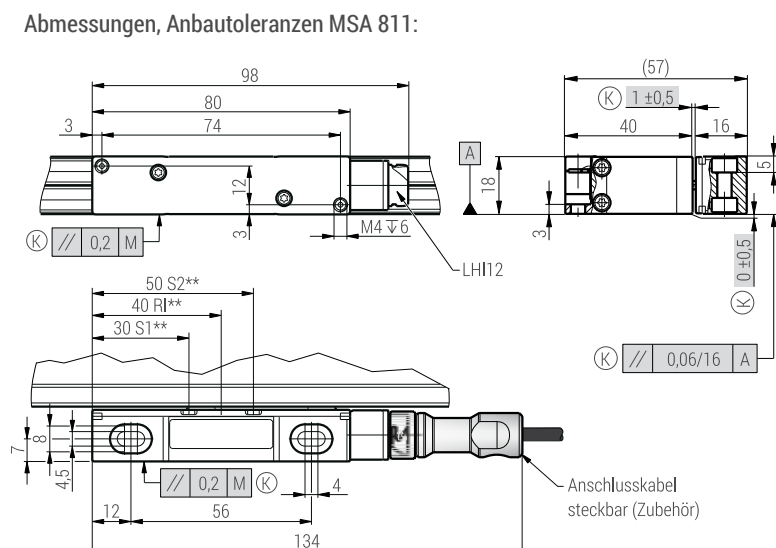
MSA 811



Abmessungen, Anbautoleranzen MSA 711:



Abmessungen, Anbautoleranzen MSA 811:



Messlänge (ML)	n
ML > 56 - 600	2
ML > 600 - 1200	4
ML > 1200 - 1800	6
ML > 1800 - 2400	8
ML > 2400 - 3000	10
ML > 3000 - 3040	12

- M = Maschinenführung
- ML = Messlänge
- ↔ = 0 ... ML
- A = Anschlusskabel
- LHI12 = Stecker
- Ⓚ = kundenseitige Anbaumaße
- FX = festes Befestigungselement
- FL = flexibles Befestigungselement
- OPTIONEN:
- S1, S2 = Schaltsignale
- RI = wählbare Referenzmarke

- * = Schaltmagnet
- ** = Sensorposition